

*Keep this book
for future reference*

HYDRO-SCOOP

for FORD TRACTORS
CATALOG No. 87-9566
MODEL No. A-1

INSTRUCTIONS

A N D R E P A I R P A R T S L I S T



IMPORTANT - - All prices in this literature are subject to change without notice and are subject to an additional charge to cover any applicable sales tax, use, occupation, or other tax affecting our purchase or sale of merchandise.

M O N T G O M E R Y W A R D

INSTRUCTIONS FOR INSTALLING AND ADJUSTING THE STOCKLAND HYDRO-SCOOP ON FORD TRACTORS

PACKING

The Hydro-Scoop is shipped not crated, ready for installation. Shipped one piece, no loose parts. Shipping weight 198 pounds.

INSTALLATION

1. Attach scoop proper to the two drawbars in the regular way at SC-108-C, using pins furnished.
2. Connect scoop to top link at SC-104-1.
3. Fasten trip rope to right-hand fender or to seat, so that rope hangs in most convenient position for manipulation.

OPERATION

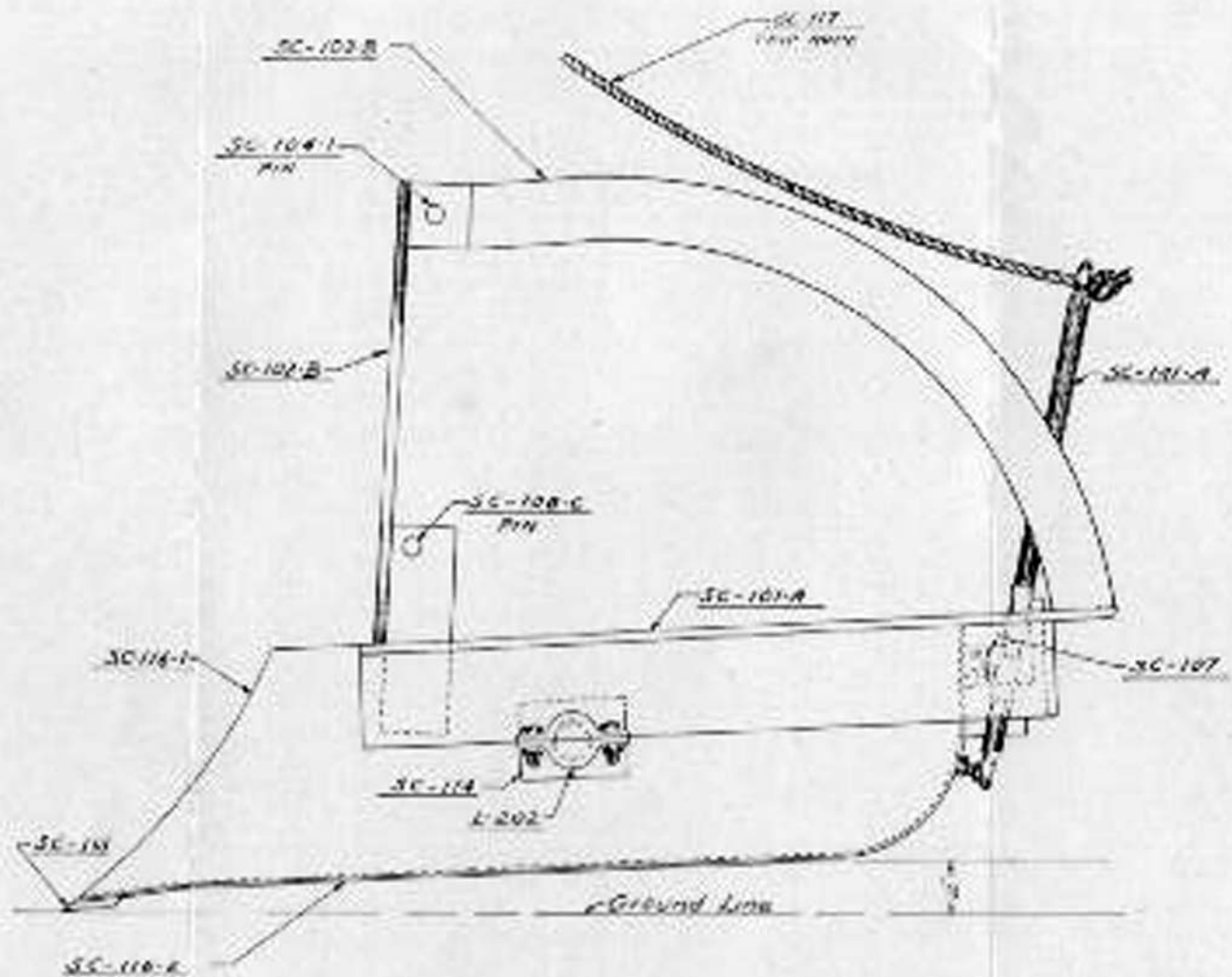
The correct pitch is that when the rear of the scoop bottom is two inches above a level floor, with the cutting edge resting on the floor. Greater pitch than this places an undue strain on the scoop assembly and consumes more power. To adjust the pitch shorten or lengthen the TOP LINK using different holes which are provided.

ADJUSTMENT

The Hydro-Scoop is raised and lowered by the hydraulic lift. It is dumped by gravity of the load and returns when empty to loading position. The depth of cut, when loading can be controlled by the hydraulic lift. Be sure the scoop is locked in loading position and raised to full height before traveling in high speed. Striking any obstruction at high speed with the scoop in the dump position places a great strain on all parts because of the extreme leverage involved.

REPAIR PARTS LIST FOR STOCKLAND HYDRO-SCOOP

PART NO.	DESCRIPTION	SHIP. WT.		LIST PRICE
		LBS.	OZ.	
SC-101-A	Main Frame	65	0	\$ 6.60
SC-101-AC	Main Frame Complete with Yoke, Brace and Lever Lock	107	0	44.10
SC-102-B	Yoke	19	8	7.70
SC-103-B	Yoke Brace	10	8	1.95
SC-107	Spring for Lever.....	0	1	.30
SC-108-C	Lower Pins.....	0	9	.55
SC-111	Bowl Hinge Bracket with Ball Pin.....	2	10	2.15
SC-115	Cutting Edge with Rivets.....	4	6	2.25
SC-116	Bowl Assembly with Edge and Ball Pins.....	84	0	26.60
SC-116-1	Bowl Side Member.....	42	6	10.90
SC-116-2	Bowl Bottom.....	32	0	5.45
SC-117	Trip Rope— $\frac{3}{8}$ " Dia., 6 ft. Long.....	0	6	1.55
SC-141-A	Lever with Bearings	6	7	1.25
L-202	Socket Caps	0	8	.70



SIDE VIEW OF HYDRO-SCOOP

HOW TO ORDER REPAIR PARTS FROM ANY WARDS BRANCH

Parts may be ordered from your nearest Wards Farm Store, Retail Store, Catalog Office, or Mail Order House. To have your order filled promptly and correctly, please furnish all the following information with your order.

1. MODEL RB1 and SERIAL NUMBER (as shown on name plate attached to Drawbar Pipe RB100-5).
2. PART NUMBER and NAME and DESCRIPTION of part as shown in the list.

Wards do not pay shipping charges. You pay charges from shipping point. Depending on the size and weight of part, you may choose one of the following shipping methods.

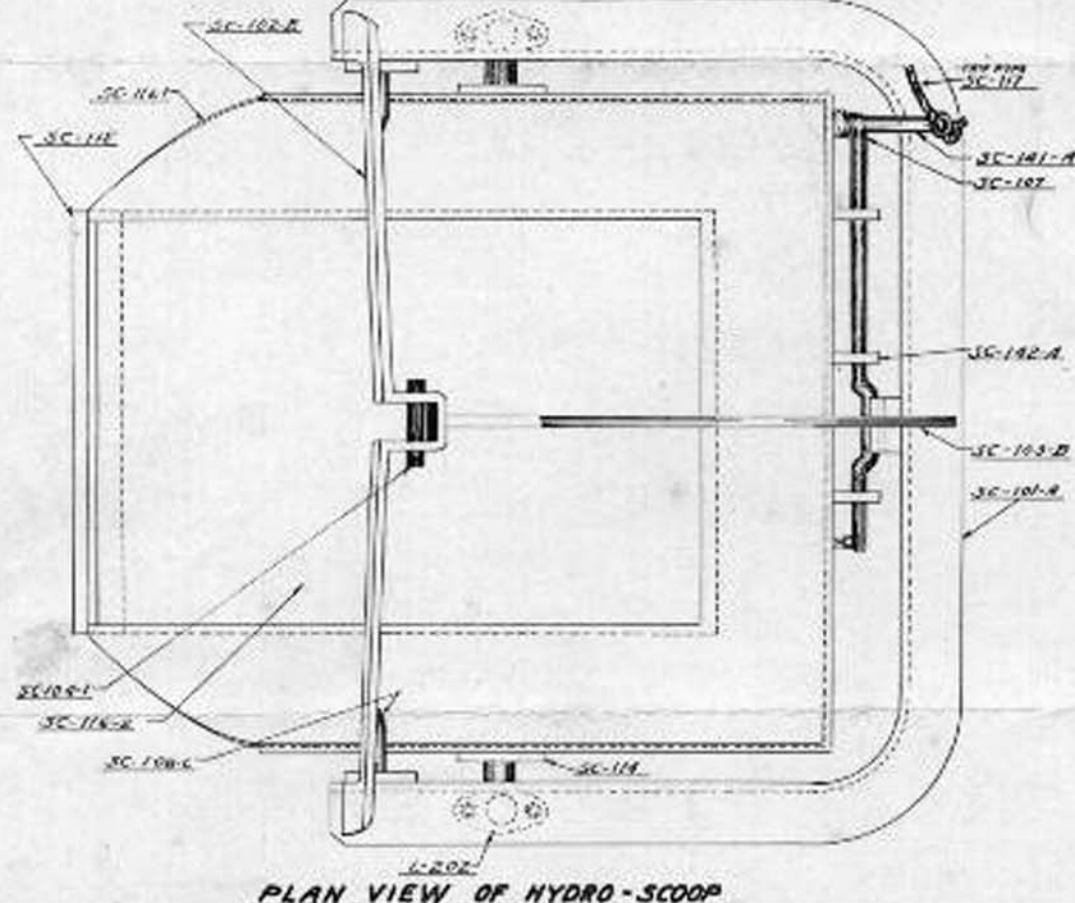
PARCEL POST . . include postage with order and remittance.

EXPRESS . . fastest for heavy, bulky, or unmailable items.

FREIGHT . . cheapest for heavy, bulky or unmailable items.

When requesting shipment by Express or Freight, pay the agent at station when goods arrive; if no agent, include estimated shipping charges with order and remittance. Consult back pages of Wards Latest General Catalog for Estimated Shipping Charges.

IN ALL CASES ANY EXCESS WILL BE REFUNDED.



PLAN VIEW OF HYDRO-SCOOP

WARDS SERVICE WARRANTY

PARTS WARRANTY. For a period of six months from date of purchase, Wards will repair or exchange without charge (except for freight or express charges) any part which Wards examination shall disclose to be defective. This does not apply to (1) parts that have worn out in normal use; (2) parts broken because of improper assembly by the customer; (3) parts accidentally damaged; (4) failure of parts traceable to improper care; (5) parts failing through use of the implement for purposes other than those for which it was designed.

LABOR WARRANTY. For a period of ninety days following equipment's first use, any labor necessary for the repair or replacement of defective parts will be furnished no charge. Service labor required during this ninety day period, for any reason other than failure due to a defective part or improper original assembly, will be paid for by the customer. The obligations assumed by Wards and the limitations expressed herein are in lieu of all other warranties expressed or implied.

*Keep this book
for future reference*

KIT for REVERSING

HYDRO-SCOOP

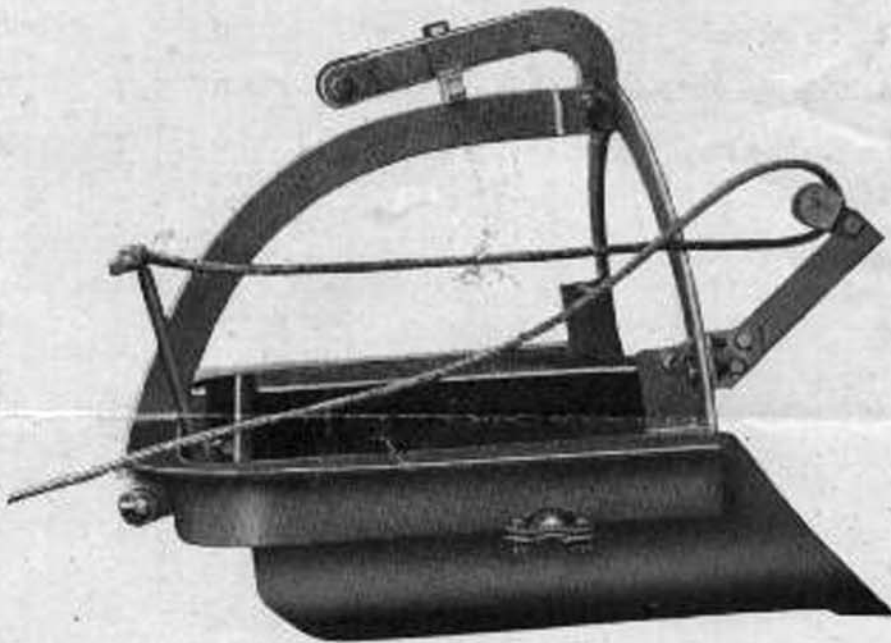
for FORD AND FERGUSON TRACTORS

CATALOG No. 87-8884

MODEL No. F48

INSTRUCTIONS

A N D R E P A I R P A R T S L I S T



IMPORTANT - - All prices in this literature are subject to change without notice and are subject to an additional charge to cover any applicable sales tax, use, occupation, or other tax affecting our purchase or sale of merchandise.

M O N T G O M E R Y W A R D

INSTRUCTIONS FOR INSTALLING REAR OPERATING DEVICE ON STOCKLAND HYDRO-SCOOP WITH FORD AND FERGUSON TRACTOR

INSTALLATION

See instructions furnished with Hydro-Scoop for method of installing scoop in forward position.

1. Bolt the regular tractor drawbar to the rear of scoop frame using two $\frac{3}{4}$ "x4 bolts and two filler blocks furnished. (On older Hydro-Scoops it will be necessary to drill two $\frac{7}{8}$ " holes in the rear of frame to accommodate above.)
2. Bolt the rope pulley bracket to the scoop

yoke, as shown, using two $\frac{1}{2}$ "x2 $\frac{1}{4}$ " bolts furnished. (On Hydro-Scoops built prior to 1948, it will be necessary to drill two $\frac{9}{16}$ " holes in yoke.)

3. Install rope, furnished, as shown.
4. Install casting SC-145 to scoop yoke as shown using the $\frac{3}{4}$ "x4 Special Pin furnished.
5. Extend tractor top link to its fullest extent.
6. Install scoop on tractor as shown.

OPERATION AND ADJUSTMENT

The proper adjustment of pitch in the scoop is very important. This pitch varies for different types of work. For digging and general work, the proper pitch is 2" at the rear of scoop bottom with the cutting edge resting on the ground.

A lesser pitch is used in handling material from a pile, and in some work, best results are obtained without pitch. PITCH ADJUSTMENT IS MADE BY MOVING THE T-HEAD BOLT IN ITS SLOT IN CASTING SC-145.

HOW TO ORDER REPAIR PARTS FROM ANY WARDS BRANCH

Parts may be ordered from your nearest Wards Farm Store, Retail Store, Catalog Office, or Mail Order House. To have your order filled promptly and correctly, please furnish all the following information with your order.

1. MODEL F48.
2. PART NUMBER and NAME and DESCRIPTION of part as shown in the list.

Wards do not pay shipping charges. You pay charges from shipping point. Depending on the size and weight of part, you may choose one of the following shipping methods.

PARCEL POST . . . include postage with order and remittance.

EXPRESS . . . fastest for heavy, bulky, or unmailable items.

FREIGHT . . . cheapest for heavy, bulky or unmailable items.

When requesting shipment by Express or Freight, pay the agent at station when goods arrive; if no agent, include estimated shipping charges with order and remittance. Consult back pages of Wards Latest General Catalog for Estimated Shipping Charges.

IN ALL CASES ANY EXCESS WILL BE REFUNDED.

WARDS SERVICE WARRANTY

PARTS WARRANTY. For a period of six months from date of purchase, Wards will repair or exchange without charge (except for freight or express charges) any part which Wards examination shall disclose to be defective. This does not apply to (1) parts that have worn out in normal use; (2) parts broken because of improper assembly by the customer; (3) parts accidentally damaged; (4) failure of parts traceable to improper care; (5) parts failing through use of the implement for purposes other than those for which it was designed.

LABOR WARRANTY. For a period of ninety days following equipment's first use, any labor necessary for the repair or replacement of defective parts will be furnished no charge. Service labor required during this ninety day period, for any reason other than failure due to a defective part or improper original assembly, will be paid for by the customer. The obligations assumed by Wards and the limitations expressed herein are in lieu of all other warranties expressed or implied.

